



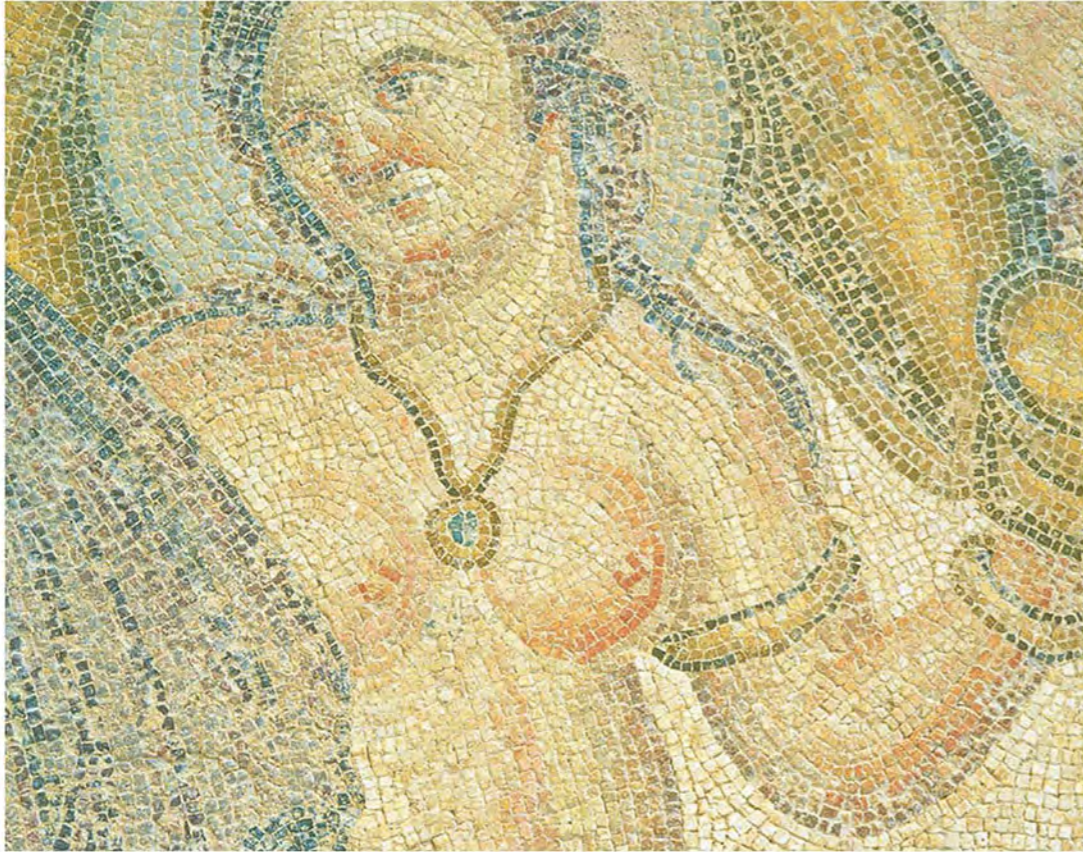
Annabelle



DISCOVER

Annabelle connects guests to the best of Cyprus, from Paphos's world famous mosaics to world-class sailing, diving, trekking and golf. Enjoy wine-tasting at Chrysorroiyatissa Monastery and a host of regional wineries; bread-making demonstrations at Kouyiouka Watermill and horseriding and jeep excursions in the Akamas National Park.





The land of myth and magic

Paphos is surrounded by fascinating archaeological sites, like the beautiful Sanctuary of Apollo Hylates, near the ancient town of Kourion.



A cultural oasis

Visit vineyards, national parks and historical attractions like the Panagia Chrysorrogiatissa Monastery, which has beautiful 300-year-old frescoes.

STAY

Opened in 1985 by George Thomas, Viscount Tonypandy, the Annabelle was the first five-star hotel in Paphos, and this iconic Mediterranean hotel is now considered the 'grande dame' of Cypriot resorts.







The hotel's fiercely loyal guests are testament to the beauty of the hotel's setting and soulful charm of its staff which keep people coming back for more.



The recently refurbished hotel is a home-from-home for many and thanks to its spectacular setting in serene sea-front gardens it is a perfect year-round holiday spot.

DREAM

Discover the art of languid living in 244 contemporary rooms and suites set in six acres of sub-tropical seafront gardens just a short walk from historic Paphos harbour. Airy interiors have a colonial charm and air of easy elegance





Inland View

Ease into languid elegance with our generous entry level rooms complete with artisan furniture, cooling marble floors and classical marble bathroom. Relax on your balcony with views towards the historic Paphos or Annabelle's lush grounds.



Inland View

Thoughtfully designed with the sea in mind, these spacious rooms feature cool marble flooring that bare feet will love and step-out balconies from which to savour the changing colours of the Mediterranean.



Terrace Sea View

Panorama Sea View





Garden Studio Suite

Classically Greek, these lovely suites for two comprise a serene open-plan bedroom and living room. Views open onto verdant palms, pretty red hibiscus flowers and relaxing waterfalls from two private patios; some suites come with a cosy fireplace. The marble bathroom has recently been refitted with walk-in showers.



Studio Suite Sea View

Located on the first floor of Annabelle - and looking out to the big blue expanse and Paphos harbour - these bright, airy suites feature an open-plan bedroom and living room with bespoke furniture and light-flooded marble bathrooms with walk-in showers.

Studio Suite with Plunge Pool



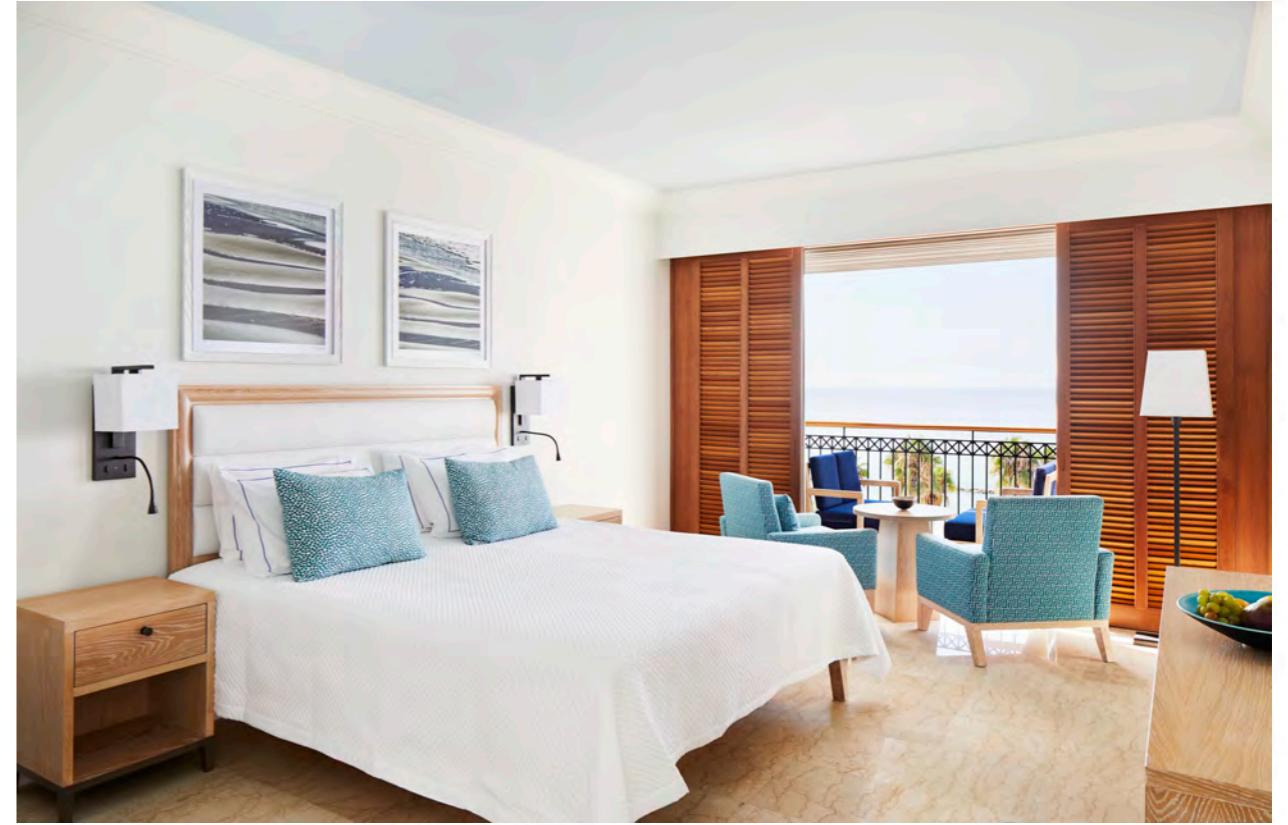
Panorama Superior Suite





Karyatis Sea View Suite

Newly opened in May 2018, these duplex suites, in true Annabelle style, reflect the hotel's colonial-chic charm coupled with a contemporary twist. Enjoying spectacular sea views, each suite has 2 extensive balconies, a 49m² living room on the ground floor and a 31m² bedroom on the first floor.



Cool white walls and Mediterranean-hued fabrics complement the custom-made wooden furnishings and traditional shuttered doors. The spacious bathroom has separate shower, large bathtub, double wash basin and a separate WC.

One Bedroom Deluxe Suite





Alecos Two Bedroom Suite

This mighty jewel in our Cypriot crown has a vast balcony with uninterrupted vistas of our colourful gardens, Paphos harbour, and the mesmerising Mediterranean. An impressive entrance leads to a refined living-come-dining room with unique colonial styling, locally crafted furniture and a private bar.



Light floods into the marble-floored bathroom from a glass roof onto an indoor whirlpool with exceptional seascape views and a walk-in shower. The balcony will make it hard to leave... Available with either one or two exceptional en suite bedrooms

DINE

Our 'Food from the Village' approach guarantees the finest local produce across a range of inspired menus. Live music and dancing add a touch of Cypriot flair, while creative bars invite you to kick back, connect or dream over a drink or afternoon tea.







Amorosa





DRINK

From statement cocktails and gourmet nibbles to refreshing poolside drinks or elegant afternoon refreshments in a chic colonial setting, the Annabelle offers a variety of different settings to choose from, whatever your mood.



Amorosa Terrace





Byz Bar

Enjoy a rich melange of ambient tunes, signature Zivania cocktails and wonderfully relaxed evening entertainment.



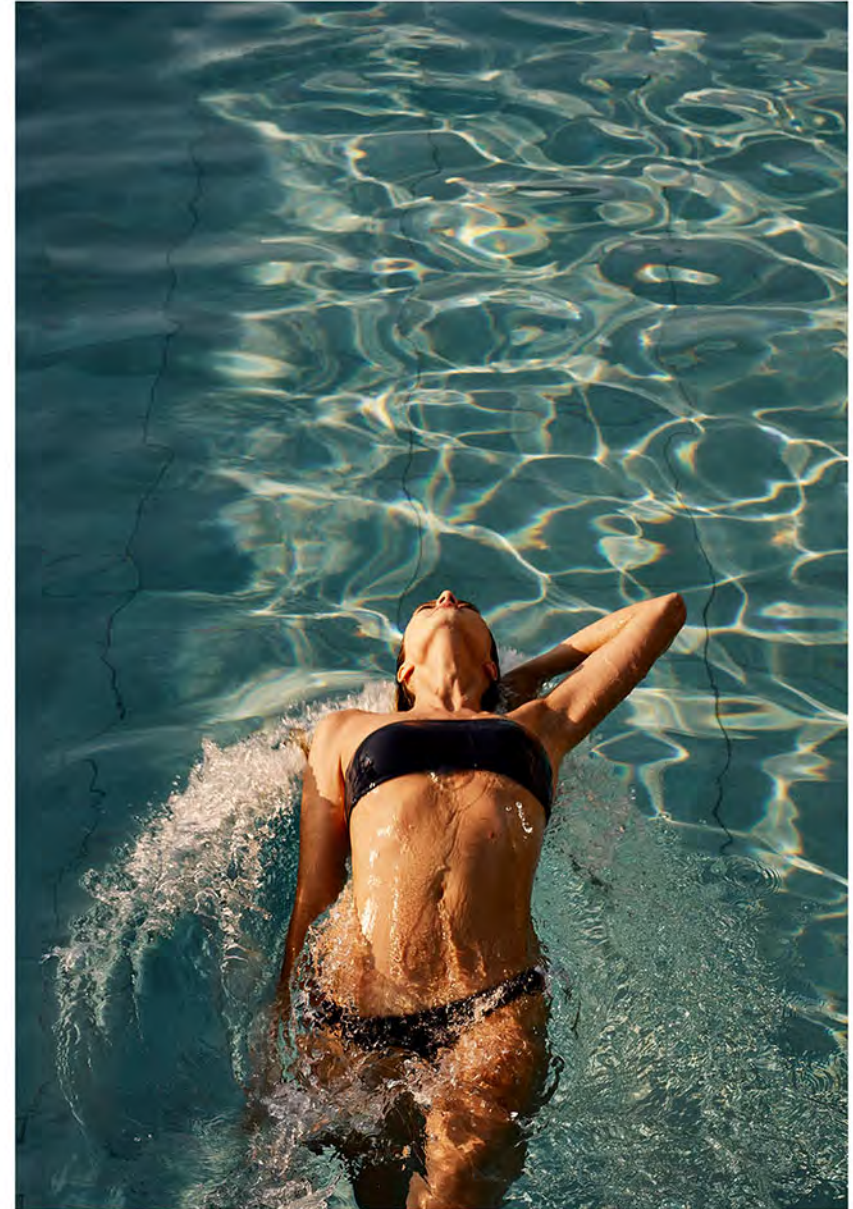
Annabell

Ouranos Lounge Bar



RELAX

For the first time in its 30-year history, the hotel will be home to a new state-of-the-art wellness centre where guests can relax, recharge and rejuvenate. The Ouranos Wellbeing Spa (Ouranos means 'sky' or 'heaven') will be located on the top floor of the hotel, from where visitors can enjoy spectacular views of Paphos Bay.







PLAY

There's so much to do in and around Paphos, from sailing and diving to hiking and golf. The Annabelle is perfectly placed to make the most of everything this fabulous region has to offer.







CYPRUS

Annabelle

● PAPHOS AIRPORT

